

Dishaa[®]

IRON WORKER

CONTACT US

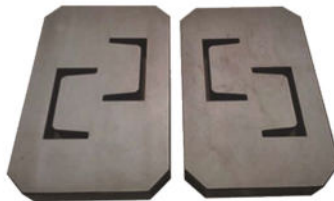
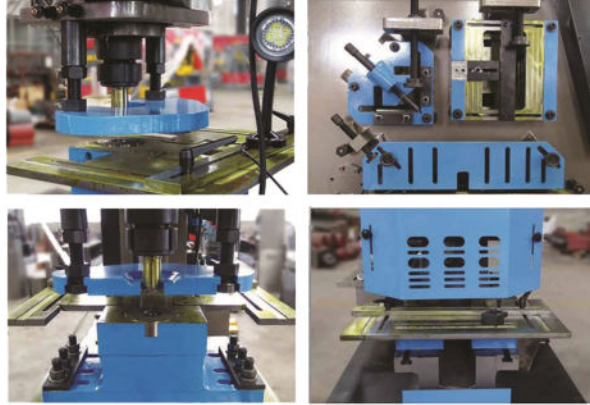
P.O. BOX: 80899, Dubai, UAE

Mob: +971 50 9696 477

Email: sajith@dishaagroup.com

Website: www.dishaagroup.com

Iron Worker



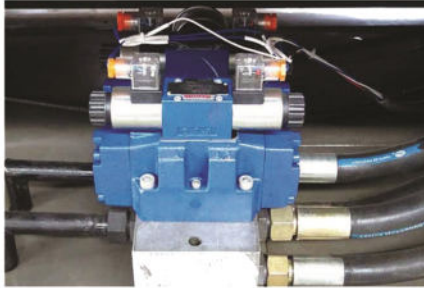
FEATURES

Hydraulic transmission, is the latest product of the multi-function joint punching and shearing machine, shearing, punching, die cut flat steel, square steel, round steel, angle steel, channel steel, I-beam carried, and equipped with shear blockfeeding devices.



Sunny Pump





Rexroth Valve



Schneider Electrics







Siemens Motor

TECHNICAL PARAMETERS

MODEL	DMIW-16	DMIW-20	DMIW-25	DMIW-30	DMIW-40
Punching Pressure (T)	60T	90T	120T	160T	200T
Max.cutting thickness of sheet plates (mm)	16	20	25	30	40
Material strength (N/mm)	≤450	≤450	≤450	≤450	≤450
Angle of shear (°)	7°	8°	8°	8°	8°
Flat bar shearing (T×W)	16×250 8×400	20×330 10×480	25×330 16×600	30×335 20×600	40×335 30×600
Max.length of cylinder stroke (mm)	80	80	80	80	100
Trips frequency (times/min)	11-20	12-20	8-18	6-16	6-16
Depth of throat (mm)	300	355	400	600	530
Punch depth (mm)	16	20	25	28	35
Max.punching diameter (mm)	25	30	35	38	40
Motor Power (KW)	5.5	7.5	11	15	18.5
Overall dimensions (L×W×H) (approx.)	1740×810×1830	1950×900×1950	2355×960×2090	2800×1050×2450	2900×1100×2500

(I- BEAM, CHANNEL STEEL NEEDS TO BE ORDERED SEPERATELY

PROFILE	SECTION	DMIW-16	DMIW-20	DMIW-25	DMIW-30	DMIW-40
Round Bar		45	50	60	65	70
Square Bar		40×40	50×50	50×50	55×55	60×60
Equal Angle	90° Shearing	120×120×12	140×140×12	160×160×14	180×180×16	200×200×18
	45° Shearing	50×50×5	70×70×10	60×60×6	80×80×8	80×80×10
T-Bar	90° Shearing	125×125×12	140×140×12	160×160×14	180×180×16	200×200×18
	45° Shearing	60×60×8	70×70×10	80×80×10	80×80×10	100×100×10
I-beam		120×74×5	160×88×6	200×102×9	280×124×10.5	300×130×13
Channel		120×53×5.5	160×63×6.5	200×75×9	280×86×11.5	300×89×11.5