

Dishaa[®]

HYDRAULIC CNC PRESS BRAKE

CONTACT US

P.O. BOX: 80899, Dubai, UAE

Mob: +971 50 9696 477

Email: sajith@dishaagroup.com

Website: www.dishaagroup.com

DMB Series

CNC Hybrid-Electro Servo Press Brake

Performance

The system consumes less energy with the servo motor.

Oil distribution according to needs has no restriction loss to achieve the energy-saving indeed.

Low temperature-rise reduces the risk of oil leakage, which has better stability and can increase the working life of hydraulic press system and oil cylinder.

Gear pump reduces working noise and sensitivity of oil cleanliness, low maintenance

Precision of ram position or manufacture isn't lower than proportional valve control system, even higher. The ram repositioning precision is $\pm 0.01\text{mm}$, highest precision will be $\pm 0.005\text{mm}$.

The consumption of hydraulic oil reduces 70%.

The simpler installation method can improve efficiency.

Flexible installation meets populous needs.

Better economic and higher performance-to-price ratio.

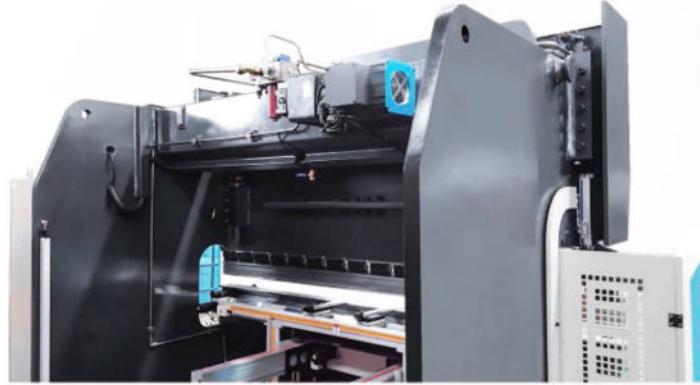


SVP

DMB-SVP Series CNC Hybrid-Electro Servo Press Brake

Servo Motor

- Using servo motor as the main power source of hydraulic pump can save about 40% energy
- The overall efficiency of the slider increases by about 7-20%
- Oil temperature can be reduced by about 10-20 °C



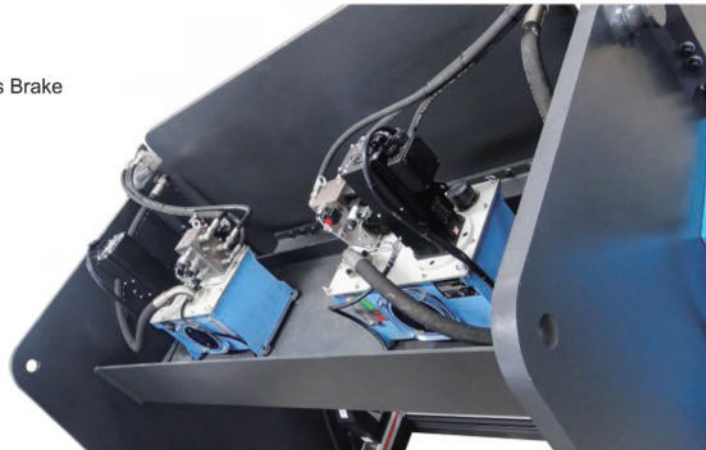
SVP Single Servo Main Motor CNC Press Brake

ESVP

DMB-ESVP Series CNC Hybrid-Electro Double Servo Press Brake

HOERBIGER ePrAX® Control

- High efficiency and energy saving, oil tank capacity reduced by 70%
- Fast-performance and duty cycle reduction 10%
- Compared with the traditional system, energy efficiency 50% up
- The positioning accuracy of precision-up to 5µm
- Integrated servo pump
- Lower-noise at work integrated pressure filters ensures high stability and long service life



ESVP Double Servo Pump Control CNC Press Brake

OPTIONAL CNC



DELEM DA53T



DELEM DA58T



DELEM DA66T



DELEM DA69T



CYBELEC CT12



ESA S640

DMB Series CNC Hydraulic-Electro Servo Press Brake

Performance

The fuselage adopts the welded structure of the split plate, which is tempered by the large tempering furnace equipment to eliminate the deformation caused by the welding stress and the processing stress to ensure the precision of the machine.

Closed loop control mode composed of electric-hydraulic servo valve and measure ruler.

Ensure the highest control precision, bending accuracy and repositioning accuracy are also reach to the highest level.

Back gauge mechanism can be multi-axes controlled.

Integrated hydraulic system decreases the pipe connections, oil leakage, and increases the stability and overall beautifies.

Worktable equipped with hydraulic and mechanical compensation to avoid the deformed upper beam from affecting the quality of the work piece, it is adjusted automatically by the CNC controller with convenient and accuracy.

CNC controller normally uses Holland DELEM, Italy ESA, Swiss CYBELEC, all with multi-languages.

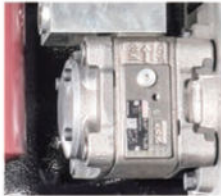


Standard Equipment

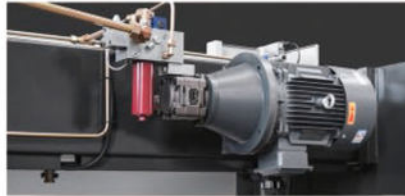
- Hydraulics by Germany BOSCH / HOERBIGER
- Servo drive and motors by Nanjing ESTUN
- Grating ruler by Spain FAGOA, Germany HEIDENHAIN
- Ball screw and linear guide by Taiwan HIWIN
- Main electrics by France SCHNEIDER
- Hydraulic compensation or mechanical compensation.
- Manual adjustable front support with linear.



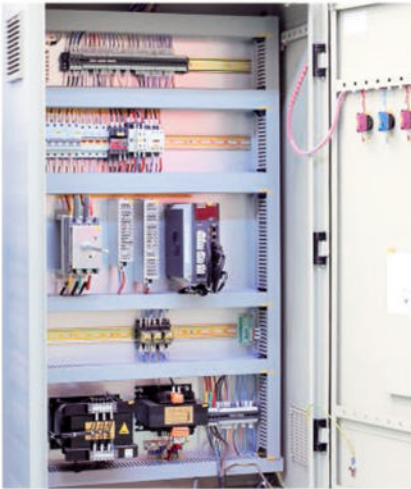
Germany BOSCH Hydraulics & Pump



U.S.A Sunny Oil Pump



Double Linear Guide



Schneider Electrics



Optional Multiple Axes With More Function

Optional Equipment



Japan KYOKKO Fast Clamping



Boke Backgauge



WILA Hydraulic Clamps



Laser Guards

CNC Controller



DA53T

- "Hot-key" touch navigation
- 10.1" high resolution colour TFT
- Up to 4 axes (Y1, Y2 + 2 aux axes)
- Crowning control
- Tool / material / product library
- Servo and frequency inverter control
- Advanced Y-axis control algorithms for closed-loop as well as open-loop valves.
- TandemLink (option)
- USB memory stick interfacing
- Profile-T offline software



160T/3200
DA53T



DA58T

- 2D graphic touch screen programming mode
- 15 "high-resolution TFT true color display
- Bending process calculation
- The deflection compensation control
- The servo and the inverter control mode
- Advanced Y axis control algorithm, can control closed loop valve, also can open loop control valve
- The USB interface



160T/4000
DA58T



DA66T

- 2D graphical touch screen programming mode
- 3D visualisation in simulation and production
- 17" high resolution colour TFT, Full Windows application suite
- Delem Modusys compatibility (module scalability and adaptivity)
- USB, peripheral interfacing
- User specific application support within the controllers multitasking environment
- Sensor bending & correction interface



100T/3200
DA66T

CNC System Brand Description

DELEM: DA53T、DA58T、DA66T

ESA: ESA S630、ESA S640

CYBELEC: CT12、MODEVA12S



CybTouch12

12" color LCD display, touch screen, icon recognition function;
 Automatically calculate bending angle, main pressure and deflection compensation;
 Automatic calculation of bending data;
 Automatic calculation of pressure and deflection compensation;
 Automatic calculation of upper die depth;
 Angle, rear gear correction, 2D graphics programming;
 Automatically simulate the bending sequence (option).



160T/3200
CybTouch12



ESA-S630

High-definition 10-inch TFT color touch screen
 Built-in PLC 2D graphics programming
 Expand length calculation
 Graphic upper and lower mold, support the multilateral mold, telescopic mold, arc mold, gooseneck mold and so on
 Graphical programming Automatic, manual optimization
 Supports analog bending
 Support for graphic or numerical arc bending
 support double-click linkage function, no need to purchase another synchronization card



160T/3200
ESA-S630



ESA-S640

High definition 15 inch TFT color display
 Built-in PLC, 2D graphics programming, Calculation of expansion length
 Graphic up and down mold, support multilateral mold, telescopic mold, arc mold, gooseneck mold, etc
 Automatic and manual optimization of graphic programming
 Support simulated bending, Support graphic or numerical arc bending
 PS2 keyboard and mouse interface
 Support dual linkage function, no need to buy synchronous card



Parameters of CNC Press Brake



Model (DMB)	63I/2500	100I/3200	125T/3200	160T/3200	200T/3200	250I/3200	300T/3200	400T/4000	500T/6000	600T/6000	800T/6000	800T/8000	1000T/6000	1000T/8000	1000T/10000
Normal Force (KN)	630	1000	1250	1600	2000	2500	3000	4000	5000	6000	8000	8000	10000	10000	10000
Bending Length (mm)	2500	3200	3200	3200	3200	3200	3200	4000	5000	6000	6000	8000	6000	8000	10000
Vertical Distance (mm)	2000	2700	2700	2700	2700	2700	2700	3100	4900	4900	4200	6200	4200	6200	8200
Throat Depth (mm)	400	400	400	400	400	400	400	400	500	500	600	600	600	600	600
Stroke (mm)	150	200	200	200	200	200	300	300	300	300	400	400	400	400	400
Max. Opening(mm)	380	420	420	420	420	420	500	600	600	600	800	800	800	800	800
Main Power (KW)	5.5	7.5	11	11	15	15	22	30	37	45	55	55	2X37	2X37	2X37
Axes	3+1(Y1, Y2, X, V)														
Compensation	(Hydraulic Compensation)							(Motorized Compensation)							
X-travel (mm)	500							800							
X-speed	200mm/s														
Overall Length (mm)	3100	3500	3500	3500	3500	3500	3500	4500	6500	6500	6500	8500	6500	8500	10500
Overall Width (mm)	1450	1580	1580	1650	1680	1700	1800	2450	2810	2910	2950	2950	3000	3000	3000
Overall Height (mm)	2300	2500	2500	2600	2700	2760	2900	3500	4500	5100	5300	5900	5600	6100	5850
Appox. Weight (Ton)	5.8	8.5	9.5	11	14	15.5	16.8	31	53	68	90	120	100	130	150



CNC PRESS BRAKE

Technical Parameters

Model (DMB)	1200T/6000	1200T/7000	1600T/6000	1600T/7000	1600T/8000	1600T/10000	2000T/8000	2000T/10000	2000T/12000	2000T/14000	3000T/8000	3000T/10000	3000T/12000	3000T/14000
Nominal Force (KN)	12000	12000	16000	16000	16000	16000	20000	20000	20000	20000	30000	30000	30000	30000
Bending Length (mm)	6000	7000	6000	7000	8000	10000	8000	10000	12000	14000	8000	10000	12000	14000
Vertical Distance (mm)	4200	5200	4200	5200	6200	8200	5050	7050	9050	11050	6200	8000	9050	11000
Throat Depth (mm)	700	700	700	700	700	700	700	700	700	700	700	700	700	700
Stroke (mm)	400	400	400	400	400	400	500	500	500	500	400	400	400	400
Max. Opening (mm)	800	800	800	800	800	800	900	900	900	900	800	800	800	800
Main Power (KW)	2X45	2X45	2X55	2X55	2X55	2X55	2X75	2X75	2X75	2X75	2X55	2X55	2X55	2X55
Axes	3+1(Y1, Y2, X, V)													
Compensation	(Motorized Compensation)													
X-travel (mm)	1000													
X-speed	200mm/s													
Overall Length (mm)	6500	8500	6500	7200	8500	10500	8500	10500	12500	14500	8500	10500	12500	14500
Overall Width (mm)	3100	3100	3300	3300	3300	3300	3500	3500	3500	3500	3700	3700	3700	3700
Overall Height (mm)	5850	7150	6500	7000	8000	8000	8000	8300	8300	8300	8600	8600	8600	8600
Apprx. Weight (Ton)	130	150	150	170	190	210	260	290	320	350	/	/	/	/

Parameters change without notice. All the above models are suitable for tandem.